



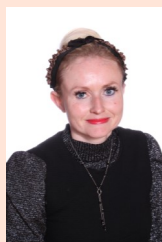
The Lyme Nursery

Complete Nursery Day Care
and
Early Years Learning



Dear Parents,
Well, the festive season is certainly on it's way. We'll be decorating the Nursery next week so for those of you who haven't experienced our warm and Christmassy welcome, you certainly are in for a treat. For any families who don't celebrate Christmas, just let us know and we can accommodate accordingly to make sure all children are involved in some kind of activity. Mandi

Who's who here at Nursery:- Stephanie EYFS/SENCO



Stephanie is our Early Years Foundation Stage statutory framework co-ordinator. She ensures we are meeting the standards for the learning, development and care of our children from birth to 5 years. She is also our Special Educational Needs Co-ordinator. A fully qualified teacher, Stephanie supports any children with special educational needs, working also alongside parents and external agencies. Stephanie joined us in March 2022 and has brought so much joy and pleasure into the team. She works around the whole Nursery supporting all of the groups. Never is there a day without a smile from our Stephanie - a joy to be around! You can contact Stephanie any time on:-senco@lymenurseryschool.co.uk

EVENING COLLECTION:-

Please can we remind all parents / families that the Nursery closes at 6pm each evening and that children must be collected before this time to avoid late fee charges and our staff can have some rest before their next shift which may commence the following day at 6.50 am. Thank you for your support.

GOVERNMENT FUNDING:-

Please contact Mandi ASAP if you wish to increase your nursery days from January, April or September 2025 due to government funding - places are filling up quickly.

SCHOOL ADMISSIONS RECEPTION APPLICATIONS:-

Not that we ever want to say good-bye to our children, we would like to remind parents that if your child will turn 4 years old before 31 August 2025, applications for school Reception places are now open. The best way to apply is online at www.staffordshire.gov.uk/admissions Staffordshire County Council will then e-mail confirmation on National Offer Day 16th April 2025 with details about your child's school place offer.

CLASSROOM UPDATES 2025:-

Next year we'll be providing more information to you about what goes on in the classrooms each month. There's always plenty of activity - such a variety of messy play (of which the staff get more messy than the children!) Watch this space!

DIARY DATES:-

- > Tue 10th Dec - Xmas Lunch (Tue children only).
- > Thur 19th Dec - Xmas Party day (Thur children only).
- > Fri 20th Dec - Pyjamas / fancy dress /cosy day (Fri children only).
- > Fri 20th Dec Nursery closes at 6pm for Xmas holidays.
- > Thur 2nd Jan - Nursery will re-open at 7am and welcome everyone back for 2025!

Invest ... in the best!

with The Lyme Nursery www.lymenurseryschool.co.uk / Tel 01782 616188